

Stormwater Pollution

The contamination of stormwater negatively impacts our lakes, rivers, wetlands, and other water bodies. Nutrients like phosphorus and nitrogen can lead to excessive algae growth and oxygen depletion. Hazardous substances from vehicles and improper use of pesticides, herbicides, and fertilizers pose a threat to water quality and can harm fish and other aquatic life. Bacteria from animal waste and improper connections between sanitary sewers and storm sewer systems can render lakes and waterways unsafe for activities such as wading, swimming, and fish consumption. Additionally, eroded soil is considered a pollutant as it diminishes water clarity and disrupts the habitats of fish and plant life.



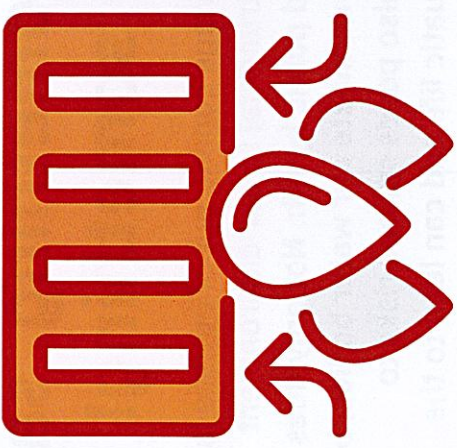
In our community, unauthorized non-stormwater discharges into the MS4 (Municipal Separate Storm Sewer System) are strictly prohibited as they are deemed illicit. However, there are certain exceptions to this rule. **Discharges from firefighting activities are authorized** when the events are emergencies/unplanned. *Discharges that are significant sources of pollutants, like sanitary connections to storm sewers, illegal dumping, and spills that find their way into the storm sewer system, are considered illicit practices that must be avoided*

For More Info on Stormwater and illicit discharge please visit:
<https://dec.ny.gov/environmental-protection/water/water-quality/stormwater>

To report an illicit discharge, please contact:

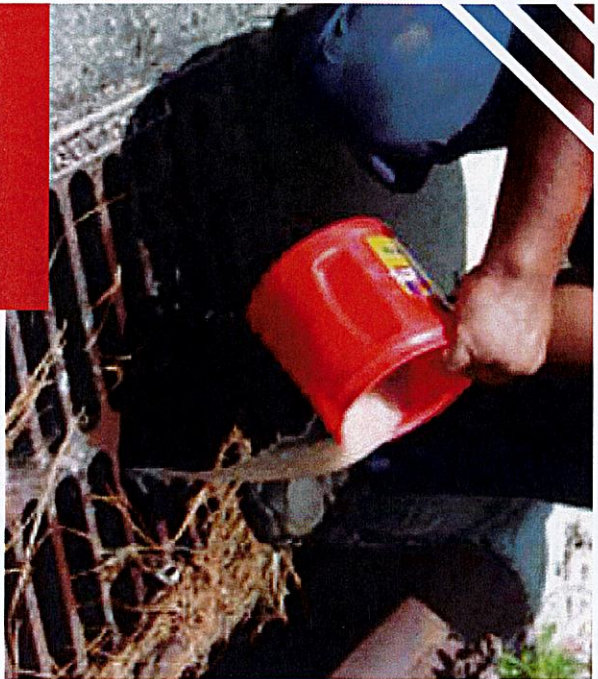
Town of Ramapo
Dept. of Public Works
(845) 357-0591

**ILLICIT
STORMWATER
DISCHARGES:
IDENTIFYING AND
PREVENTING
STORMWATER
POLLUTION IN
YOUR
NEIGHBORHOOD**



**Cornell Cooperative
Extension of Rockland**

RocklandCCE.org



What is an illicit Discharge?

An illicit (illegal) discharge occurs when any substance other than stormwater is released into a municipal storm sewer system, including storm drains, pipes, and ditches. Pollutants enter storm sewer systems through various preventable means, such as the improper connection of waste pipes to stormwater pipes by companies or residences, as well as the disposal of different types of waste into storm drain inlets by individuals. It is important to note that disposing of anything other than stormwater into storm sewers is illegal!



Things you can do to help water quality

- Never dump anything down storm drains
- Use lawn and garden chemicals sparingly; sweep up any excess from driveways, sidewalks, and roads
- Repair vehicle leaks; cover spilled fluids with kitty litter then sweep into household waste
- Pick up after your pet and dispose of it properly
- Control soil erosion on your property by planting ground cover and stabilizing erosion-prone areas
- Keep grass clippings, leaves, litter, and debris out of street gutters and storm drains
- Direct downspouts onto grassy areas away from paved surfaces
- Use a commercial car wash or wash your vehicle on the grass instead of the driveway
- Dispose of used oil, antifreeze, paints and other household chemicals in an approved manner



If you see/smell something, say something!

Sewage coming out of outfalls is detrimental to our environment and public health. Not only does it contaminate our water bodies, but it also poses serious risks to aquatic life and can lead to the spread of harmful pathogens.

